

MALDIVES LAND SURVEY AUTHORITY

MINISTRY OF HOUSING AND INFRASTRUCTURE
 Office (PABX): +(960) 3004300, Fax: +(960) 3004254
 Email: survey@housing.gov.mv
 Web: www.surveyofmaldives.gov.mv,
 Ameenee Magu, Maafannu, Male', 20392, Maldives.



CONTROL POINT DETAILS	Station Number	PSM 5810
Coordinate Information		
Geodetic	Grid	
WGS 84	UTM Zone 43	
Lat: 4°36'12.86184"N	E:	342578.100m
Long: 73°34'51.18649"E	N:	509000.583m
Ellp Height: -79.770	Orth Height:	+3.477m
Island Name: K.Fari Kan'du Huraa - LD1705	Date:	26th JANUARY 2021

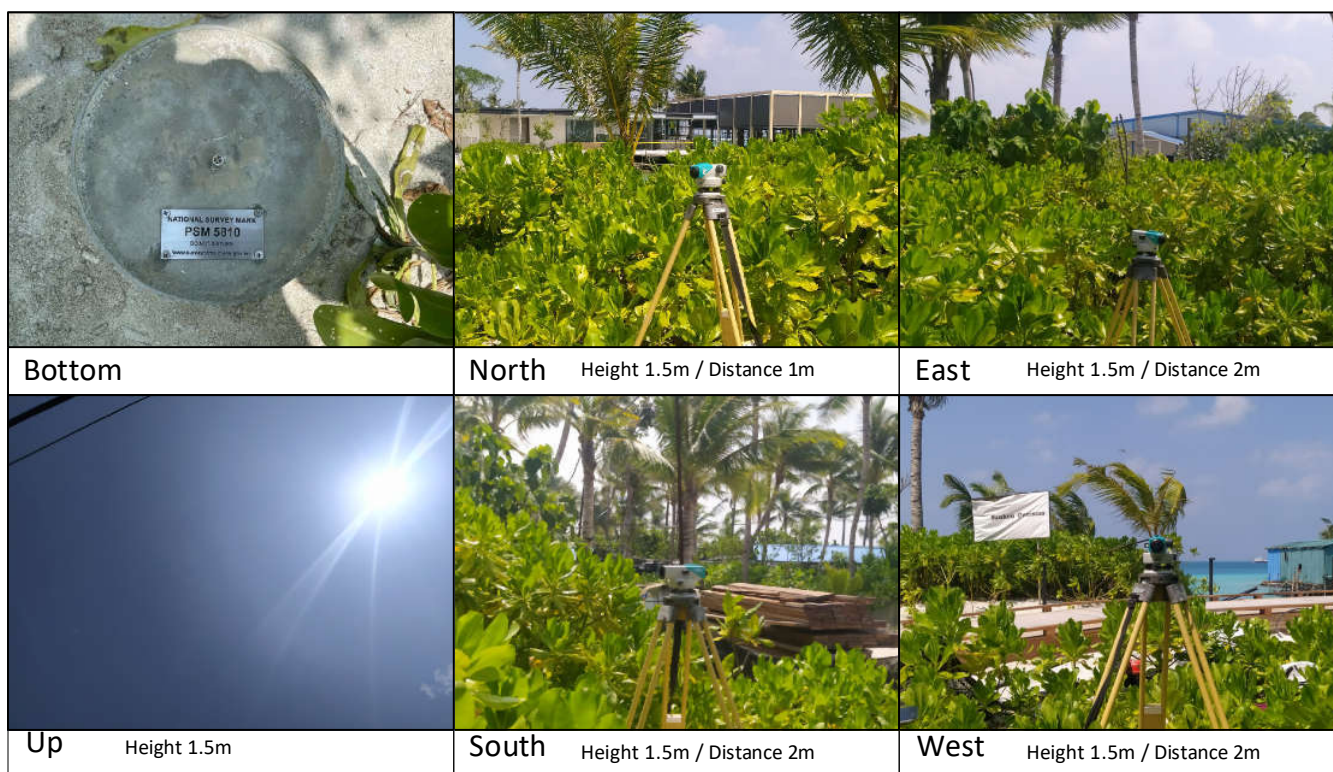
Monument description & method of survey:

- Monument Type A as in Technical Brief
- Stainless steel plate fixed to concrete by Four bolts
- Horizontal coordinates fixed by GNSS Static survey.
- Elevation reduced relative to ellipsoid height difference, reference to PSM 5811 which was corrected to Meanwater level by tide prediction table (Hulhule)
- **PSM 5810 is 150mm above ground Level**

General site condition & access:

- Easily accessible area with wide angle of sky visibility
- **Located in LD1705 near the access bridge to LD1704**

Owner: MESA RF PRIVATE LIMITED

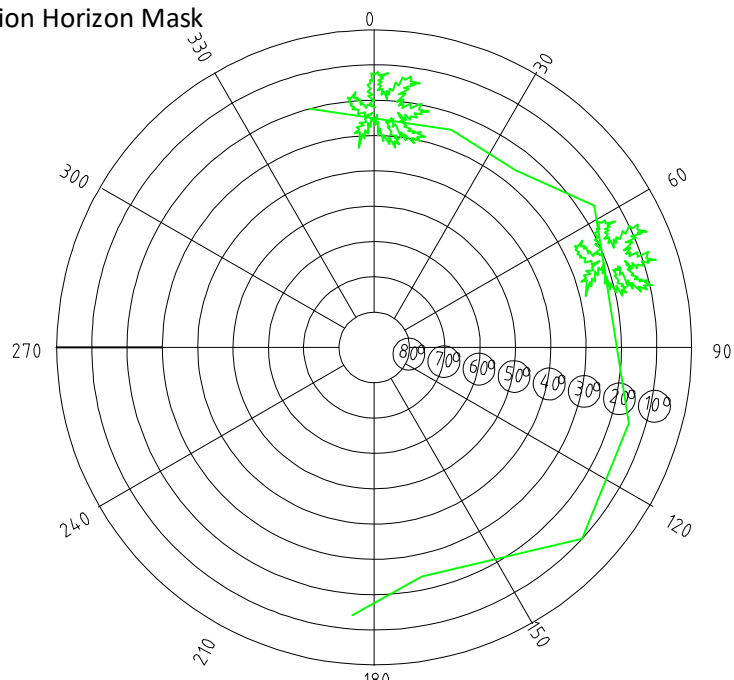


SITE INFORMATION

Station Number

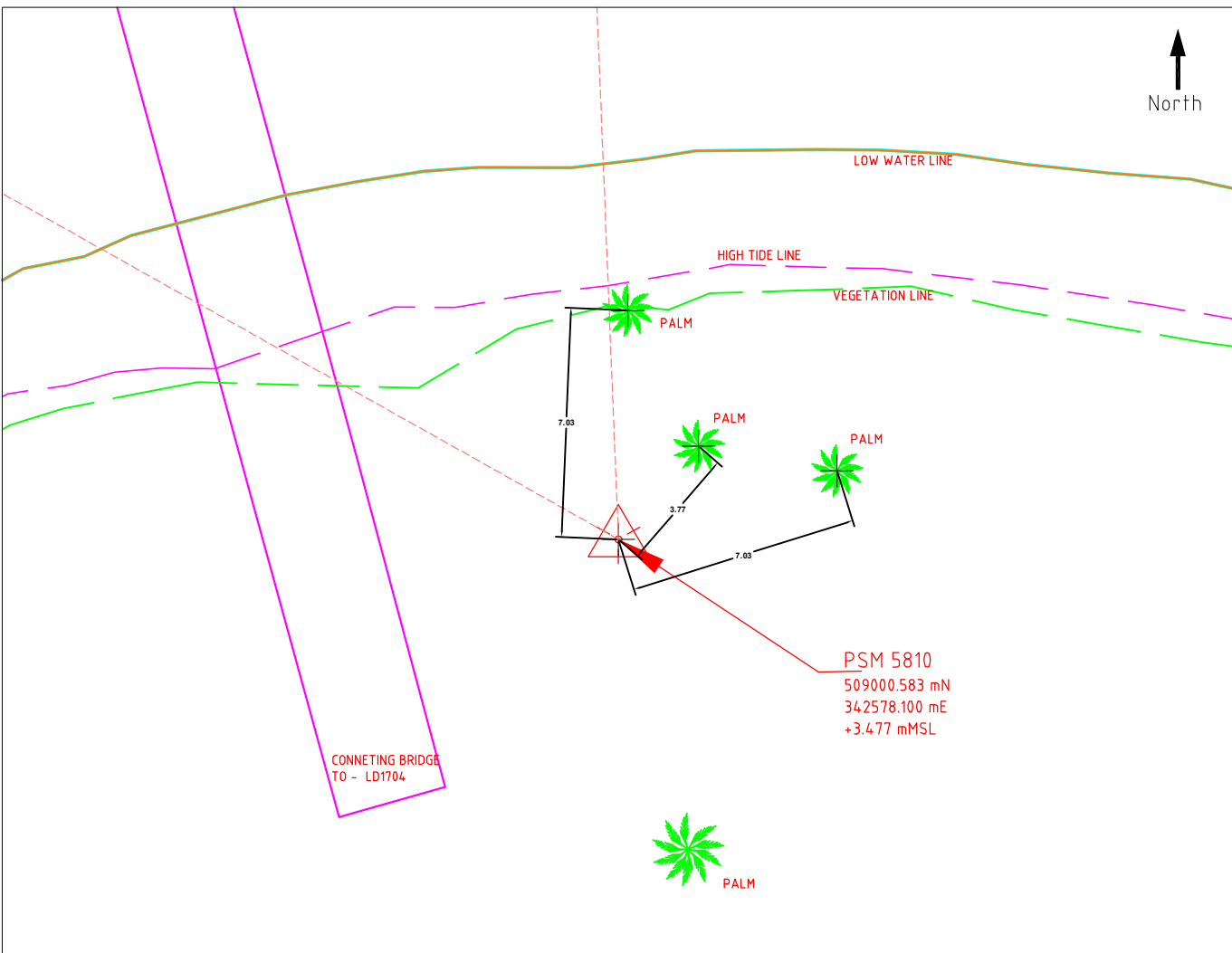
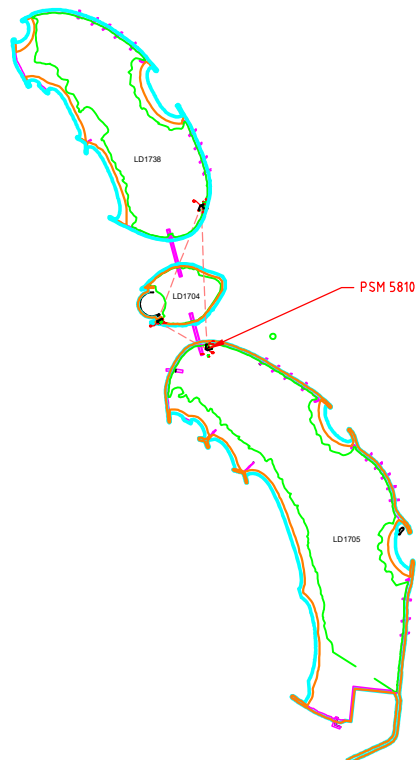
P	S	M	5	8	1	0
---	---	---	---	---	---	---

Station Horizon Mask



Height above Marker that horizon was mapped from: 1.5 m

Magnetic Declination Declination applied to this figure?
 Yes No



Sketched by: Abdulla

Scale: Not to Scale

Date: 27th JANUARY 2021

MALDIVES LAND SURVEY AUTHORITY

MINISTRY OF HOUSING AND INFRASTRUCTURE
 Office (PABX): +(960) 3004300, Fax: +(960) 3004254
 Email: survey@housing.gov.mv
 Web: www.surveyofmaldives.gov.mv,
 Ameenee Magu, Maafannu, Male', 20392, Maldives.



CONTROL POINT DETAILS	Station Number	PSM 5811
Coordinate Information		
Geodetic	Grid	
WGS 84	UTM Zone 43	
Lat: 4°36'14.17008"N	E:	342506.255 m
Long: 73°34'48.85281"E	N:	509040.908 m
Ellp Height: -81.120	Orth Height:	+2.127m
Island Name: K.Fari Kan'du Huraa - LD1704	Date:	26th JANUARY 2021

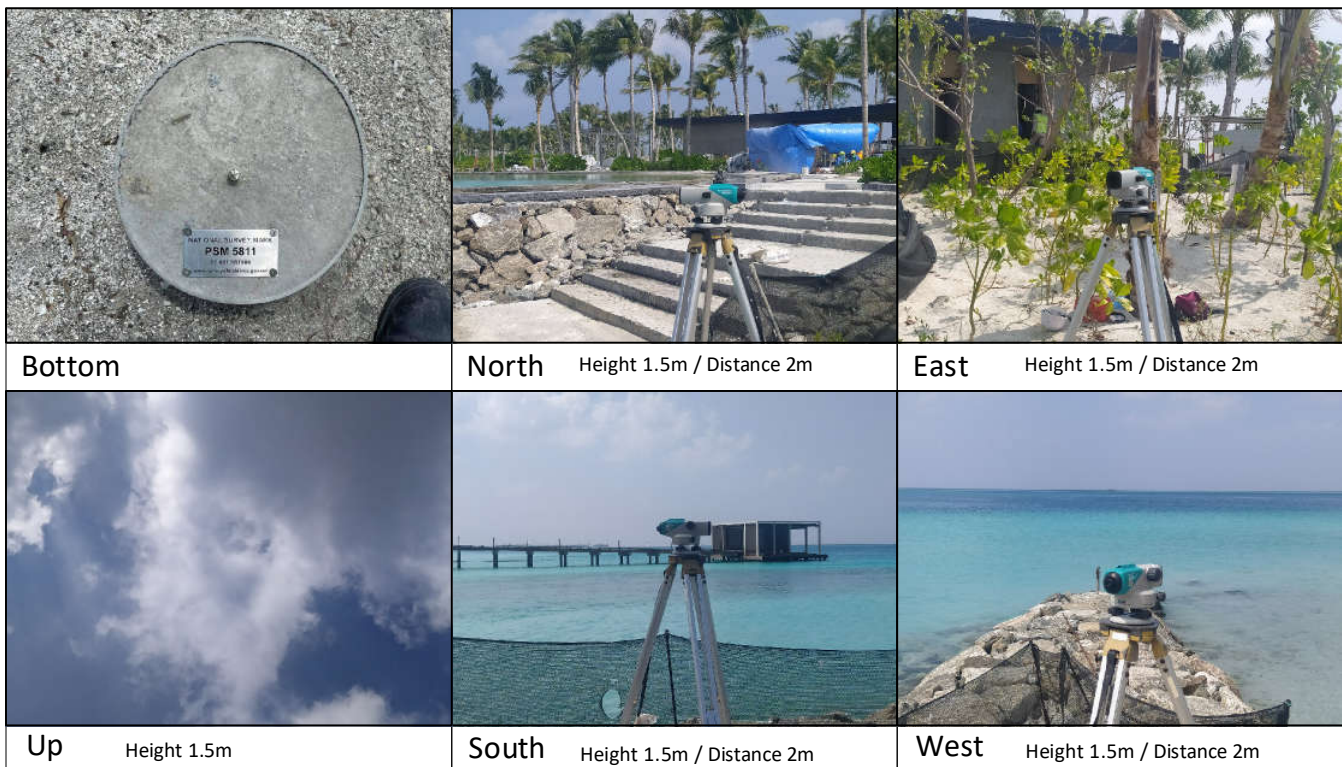
Monument description & method of survey:

- Monument Type A as in Technical Brief
- Stainless steel plate fixed to concrete by Four bolts
- Horizontal coordinates fixed by GNSS Static survey.
- Vertical height corrected using tide prediction data (Hulhule)
- **PSM 5811 is 150mm above ground Level**

General site condition & access:

- Easily accessible area with wide angle of sky visibility
- **Located in LD1704 near the south of Swimming Pool shore protection groyne**

Owner: MESA RF PRIVATE LIMITED

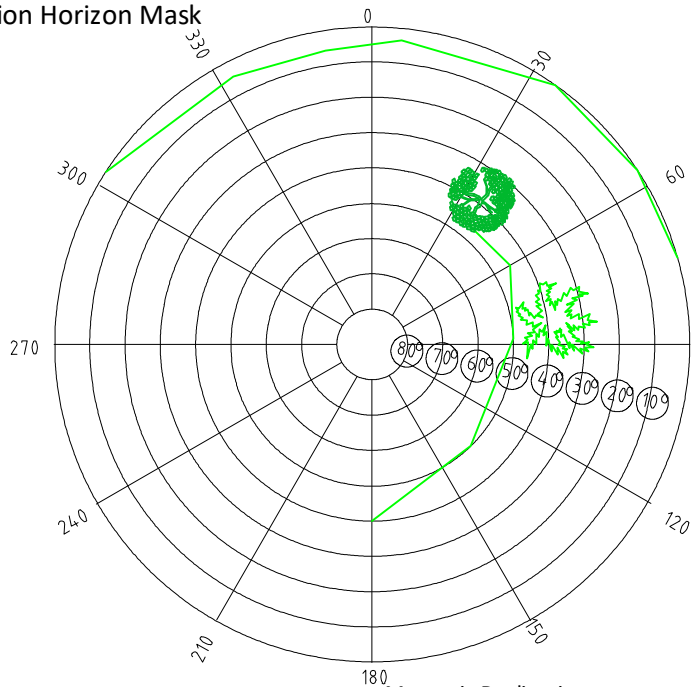


SITE INFORMATION

Station Number

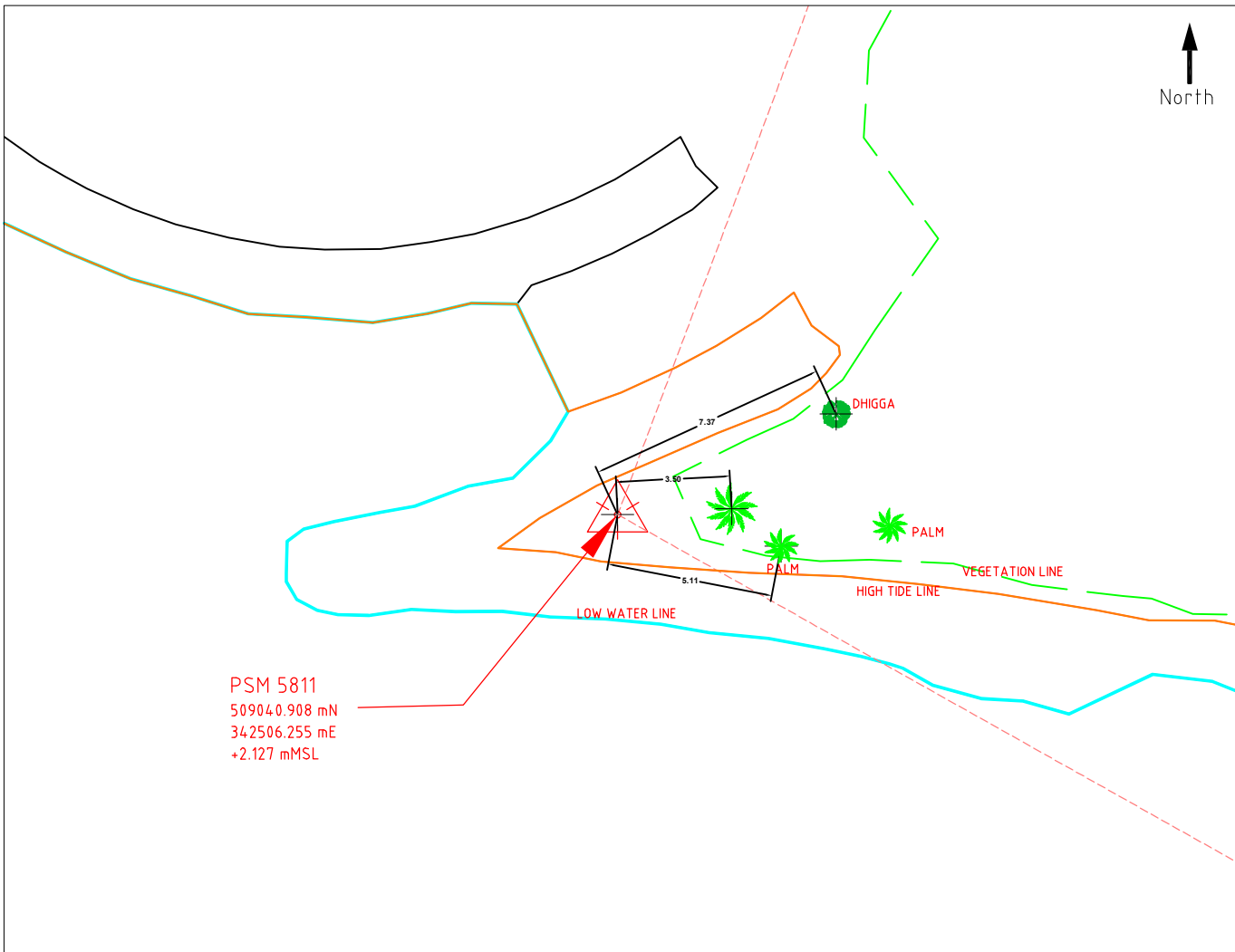
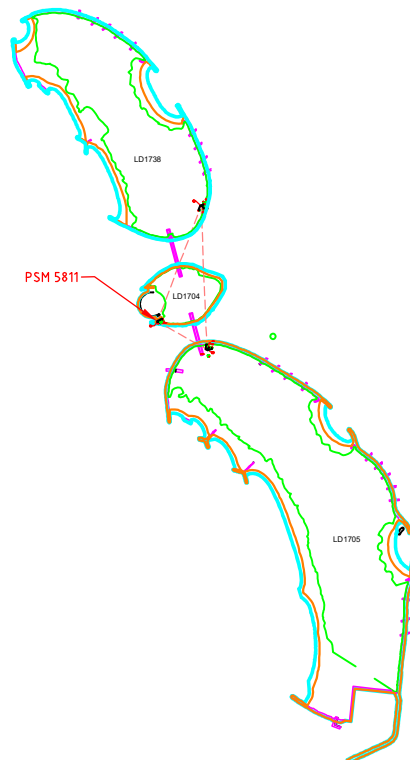
P	S	M	5	8	1	1
---	---	---	---	---	---	---

Station Horizon Mask



Height above Marker that horizon was mapped from, m

Magnetic Declination Declination applied to this figure?
 Yes No



PSM 5811
 509040.908 mN
 342506.255 mE
 +2.127 mMSL

Sketched by: Abdulla

Scale: Not to Scale

Date: 27th JANUARY 2021

MALDIVES LAND SURVEY AUTHORITY

MINISTRY OF HOUSING AND INFRASTRUCTURE
 Office (PABX): +(960) 3004300, Fax: +(960) 3004254
 Email: survey@housing.gov.mv
 Web: www.surveyofmaldives.gov.mv,
 Ameenee Magu, Maafannu, Male', 20392, Maldives.



CONTROL POINT DETAILS	Station Number	PSM 5812
Coordinate Information		
Geodetic	Grid	
WGS 84	UTM Zone 43	
Lat: 4°36'19.67971"N	E:	342569.638 m
Long: 73°34'50.89842"E	N:	509210.006 m
Ellp Height: -80.225	Orth Height:	+3.022m
Island Name: K.Fari Kan'du Huraa - LD1738	Date:	26th JANUARY 2021

Monument description & method of survey:

- Monument Type A as in Technical Brief
- Stainless steel plate fixed to concrete by Four bolts
- Horizontal coordinates fixed by GNSS Static survey.
- Elevation reduced relative to ellipsoid height difference reference to PSM 5811 which was corrected to Meanwater level by tide prediction table.
- **PSM 5812 is -50mm below ground Level**

General site condition & access:

- Easily accessible area with wide angle of sky visibility
- Located in LD1738 Northeast end revetment
- Near guest beach Villa at Northern Side.

Owner: MESA RF PRIVATE LIMITED

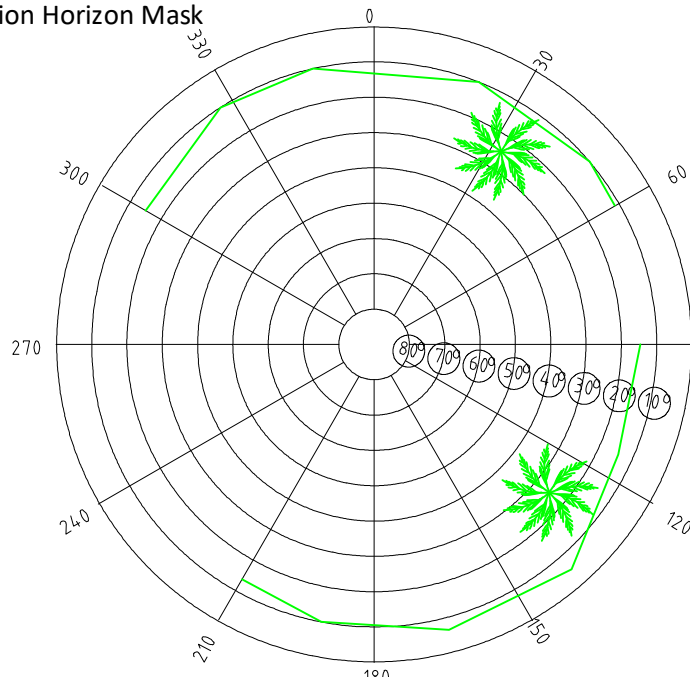
Bottom	North Height 1.5m / Distance 2m	East Height 1.5m / Distance 2m
Up Height 1.5m	South Height 1.5m / Distance 2m	West Height 1.5m / Distance 2m

SITE INFORMATION

Station Number

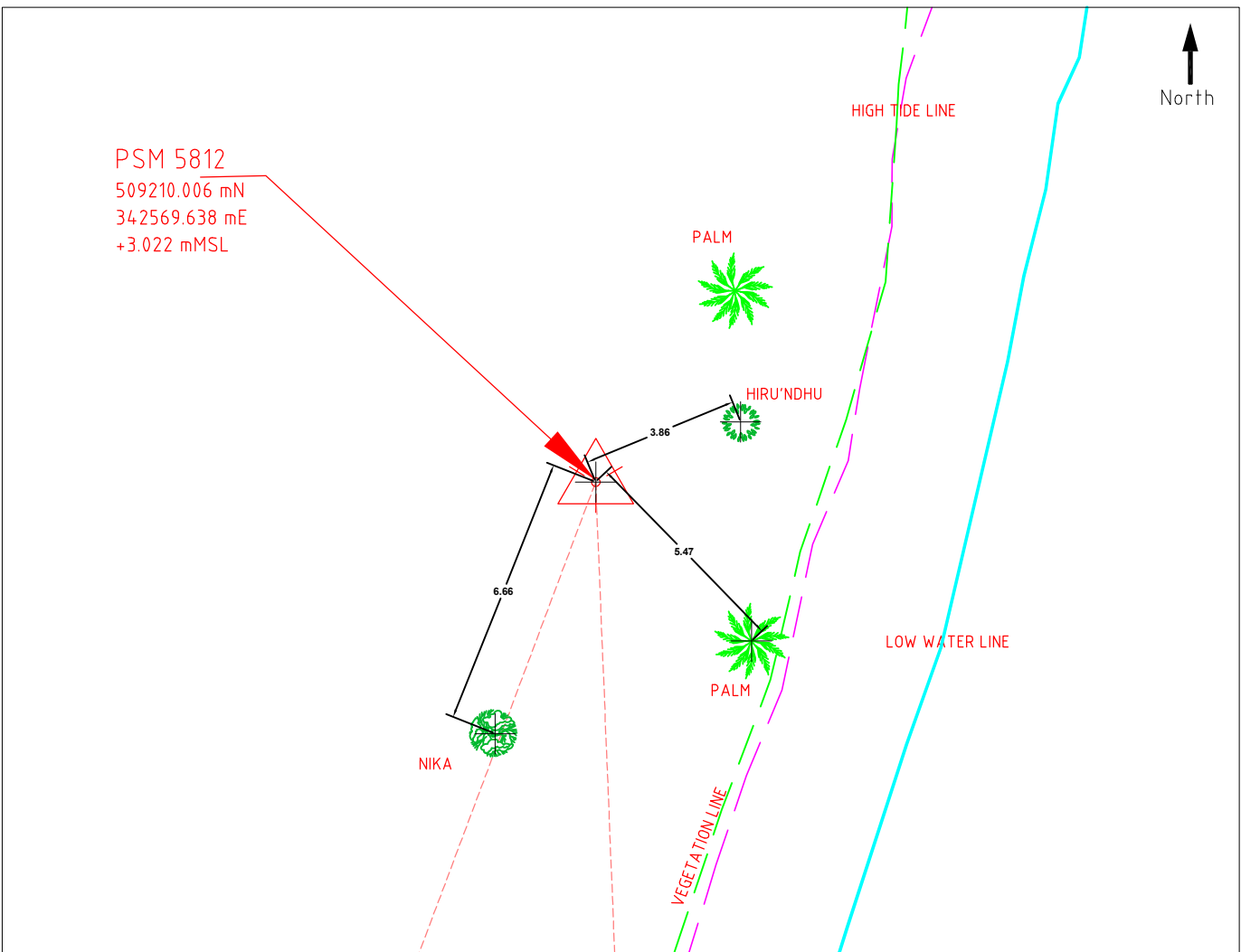
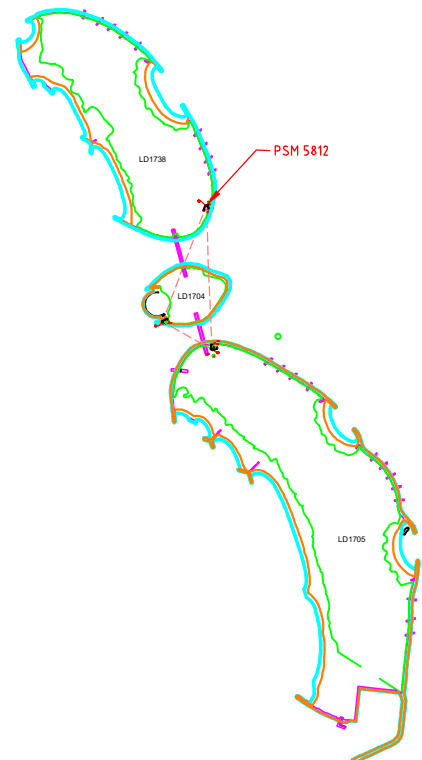
P	S	M	5	8	1	2
---	---	---	---	---	---	---

Station Horizon Mask



Height above Marker that horizon was mapped from: 1.5 m

Magnetic Declination Declination applied to this figure?
 Yes No



Sketched by: Abdulla

Scale: Not to Scale

Date: 27th JANUARY 2021

MALDIVES LAND AND SURVEY AUTHORITY, MINISTRY OF HOUSING AND INFRASTRUCTURE, Ameene Magu, Maafannu, Male', 20392, Maldives,
 Office (PABX): +(960) 3004300, Fax: +(960) 3004254, Email: survey@housing.gov.mv, Web: www.surveyofmaldives.gov.mv